

Shawnee Neighborhood

Monday, May 23, 2011



Integrated Community Sustainability Planning and Visioning Process

Jim Embry
Sustainable Communities Network
<http://sustainlex.org>

Lexington, KY



Shawnee Neighborhood Sustainability Plan could
become a model for Louisville

IMAGINE Shawnee

Sustainable Louisville is possible through
development of sustainable neighborhoods like
Shawnee





i am stardust condensed in human form

Represent 14 billion years of cosmos/universe development-evolution, Represent 4.5 billion years of Earth evolution, Represent 2 million years of human evolution, Represent 30-50,000 years of Turtle Island, 400 years of American revolution

- Grand son of small farmers, born in Richmond, KY
- Great great Grand father fought and died in the Civil War
- Great great grand father went to Berea College in 1879 and refused to give up his seat on buses in the 1930 and 40s
- Mother President of CORE in 1960, at 10 years old civil rights activist
- Civil rights movement, Black Power Movement, Women, labor, Human rights activist, peace, environmental,
- 1972 helped found Good Foods Co-op
- 1979 Energy and the Way We Live Conference...LFUCG recycle
- 2000-2005 lived in Detroit working on a GREEN VISION for Motown
- 2008, 2010 Italy for Terra Madre, sustainability gatherings in Cuba, Brazil, India,i am a **Sacred Earth activist.**

Sustainable Communities Network

Founded in 2005 community based

- Network of people... **local, state, national, international**
- Contribute to the awareness and practice of sustainable living
- Believe that sustainability movement encompasses all other social movements
- **LOCAL FOOD** system is the foundation of sustainable community
- Community gardening is essential to local foods system, citizenship, eco-literacy
- Community garden is where children learn citizenship, good eating habits, where food comes from how to work together, sacred Earth Connections, systems thinking

Sustainable World Coalition

**Sustainable Communities Network contributed
articles, photos, quotes**

SCN Classes:

Sustainability 101

Worm Composting

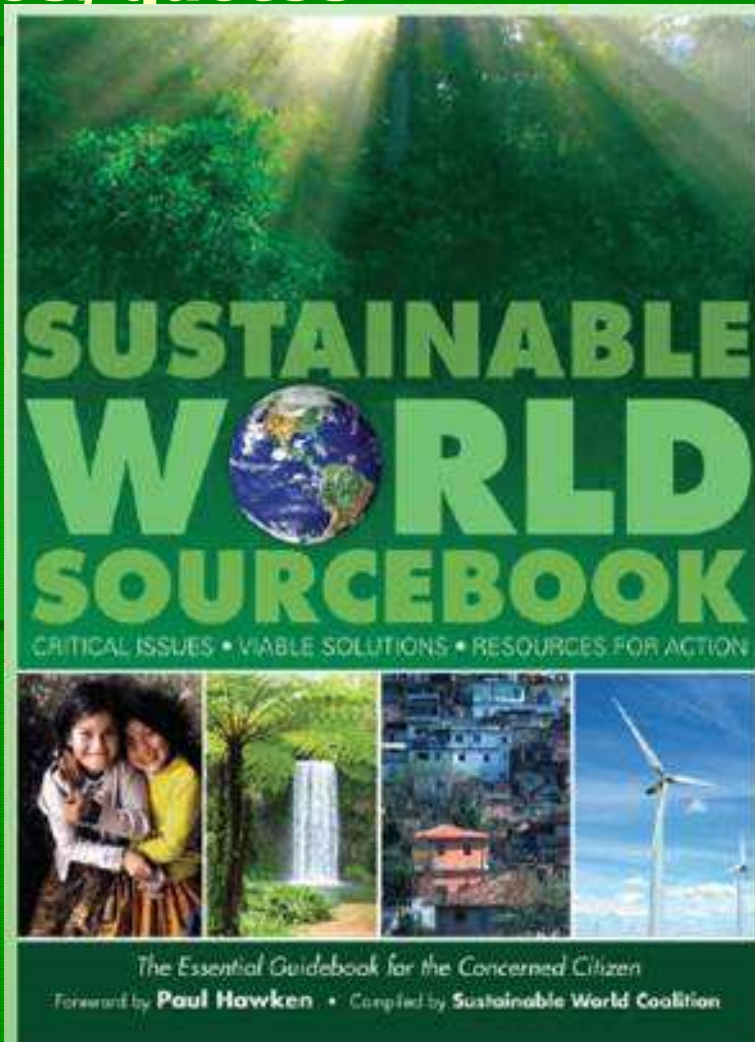
Backyard Composting

Rain gardens

Rain Barrels

Butterfly gardens

Natural Habitats



Faith Community

Workshops

Creation Care

Stewardship of
Creation Retreats

Gardens of Eatin

Sermons

Annual Local
Food Summit

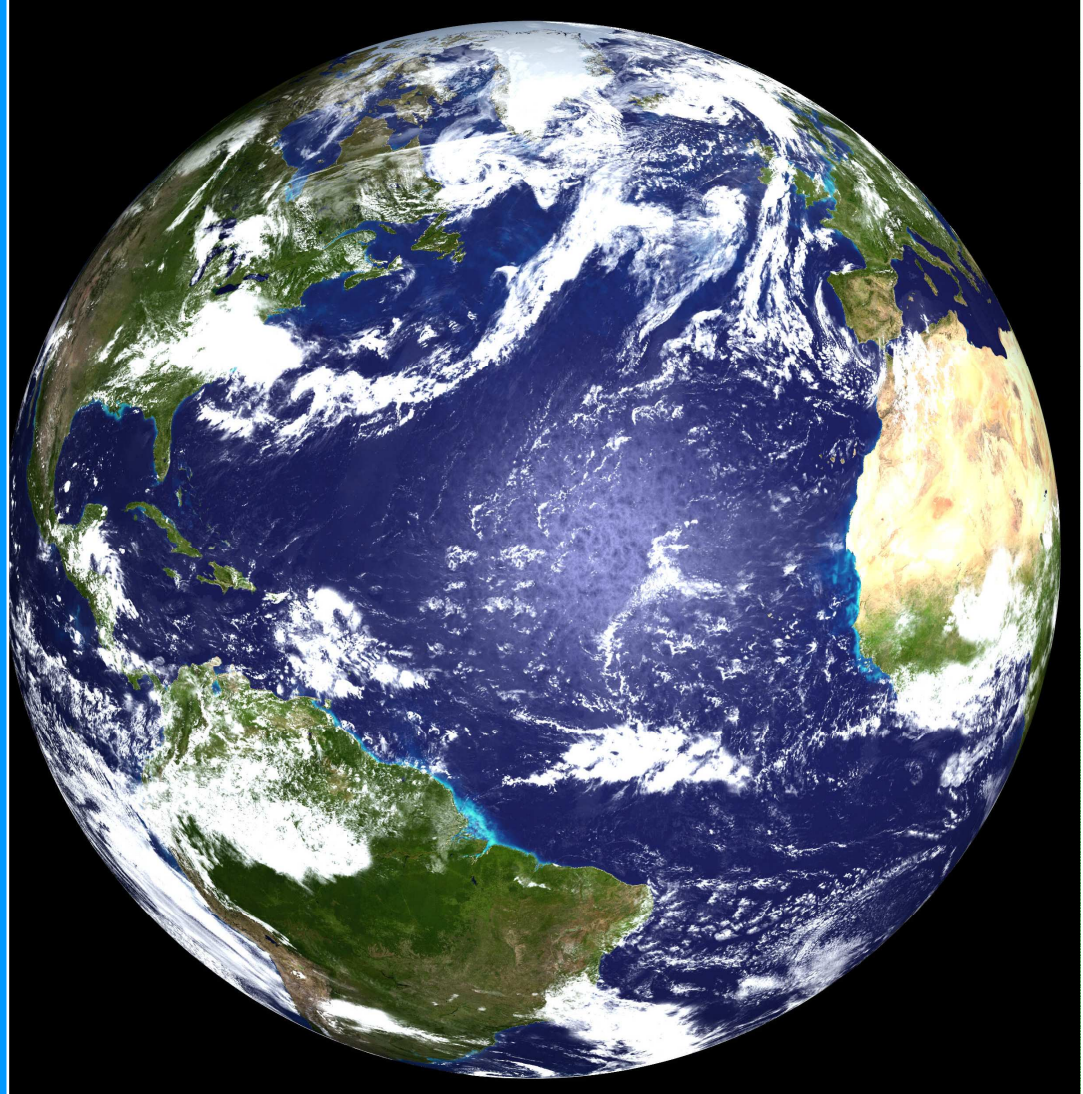
Earth Charter, Local Agenda 21

- *Bruntland UN Commission*
- *1992 UN Earth Summit, Earth Charter begins.....*
- *1997 Earth Charter..universal declaration...adopted*
- ***UN Local Agenda 21 document ..blueprint for local sustainable development***

*Concern for
poverty, inequity, environment*

“We stand at a critical moment in Earth’s history, a time when humanity must choose its future.To move forward we must recognize that in the midst of a magnificent diversity of cultures and life forms we are one human family and one Earth Community with a common destiny.”

– The Earth Charter



A Brief History of the Earth Charter Initiative

1987 -
1992

Origins - The Brundtland Commission calls for “a new charter or universal declaration” on environment and development to “guide state and inter-state behavior.” UN Earth Charter process is stopped at Earth Summit; Rio Declaration adopted instead (1992)

1994 -
2000

Phase 1 - Development and Global Consultation

Maurice Strong and Mikhail Gorbachev relaunch Earth Charter as a civil society initiative; drafting and consultation process begins (1994); Earth Charter Commission created (1997); 5,000 people contribute comments

2000 -
2005

Phase 2 - Launch and Establishment

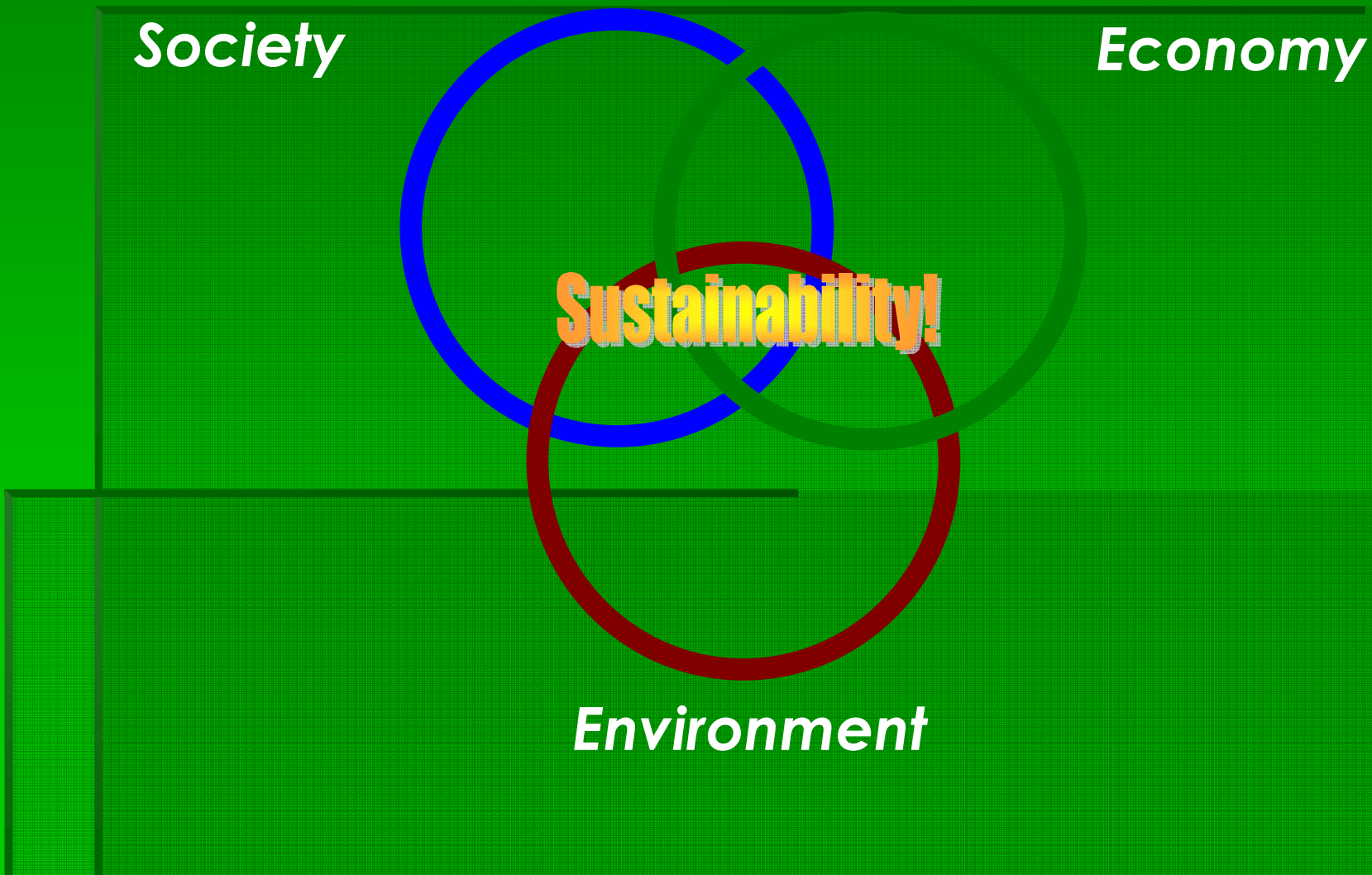
Final text approved and launched, and endorsement campaign begins (2000); Earth Charter promoted strongly at WSSD in Johannesburg, but not formally adopted (2002); local and grassroots action grows, important international endorsements continue (such as IUCN, 2004)



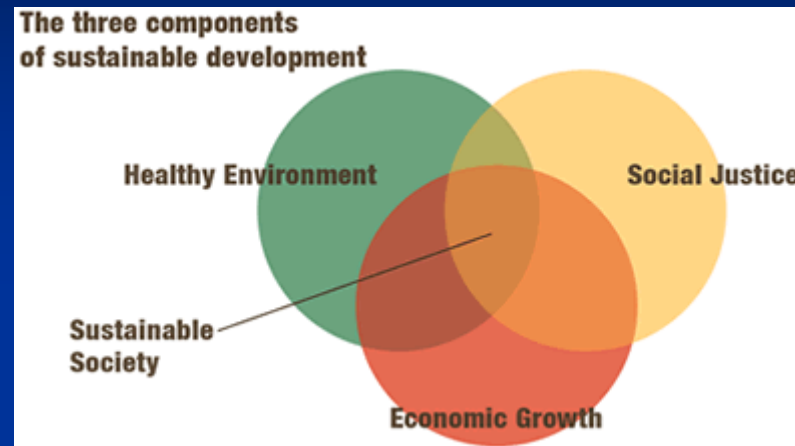
2006 -

Phase 3 - Expansion with Action Orientation

Sustainable Development **...Earth Charter**



Sustainability & the Triple Bottom Line

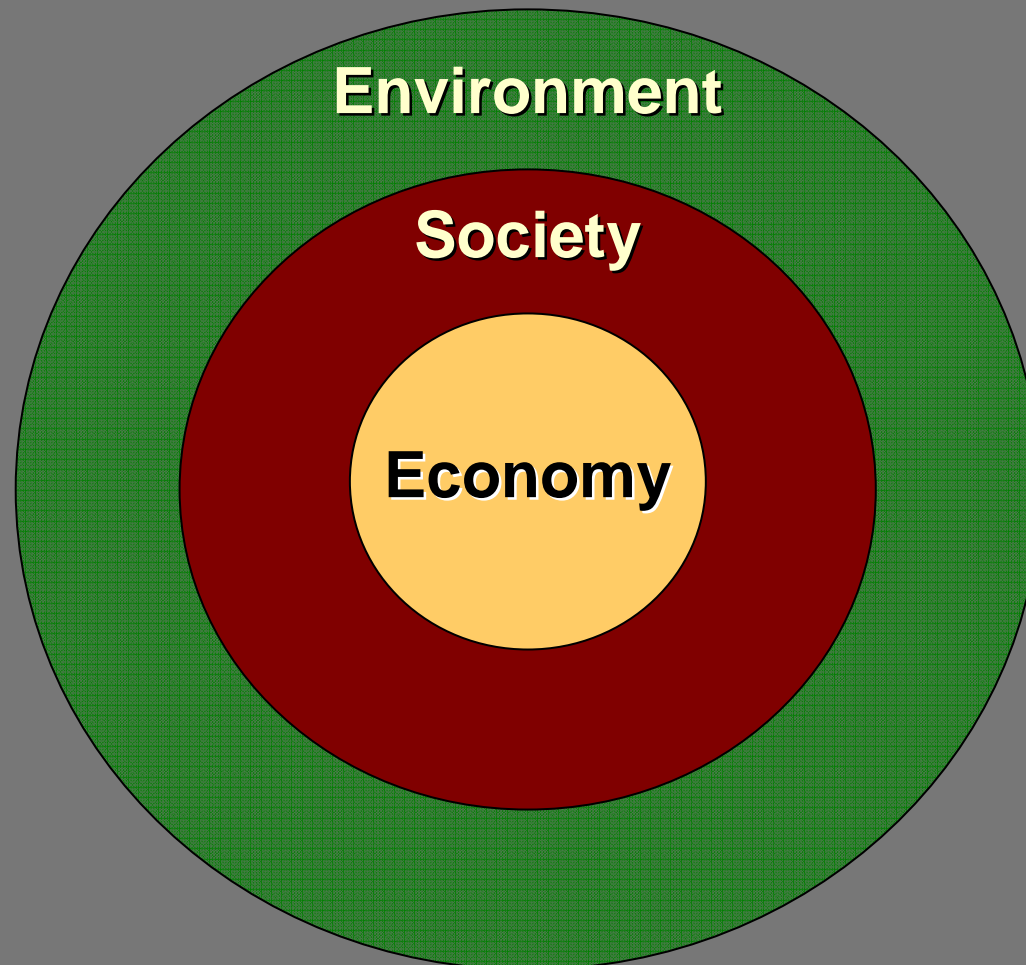


- Social, economic, environmental
- People, profit, planet
- Sustainability means integrating three dimensions: social justice, economic security, and ecological integrity



***“The economy and society are wholly-owned subsidiaries
of the environment.”***

~ David Orr



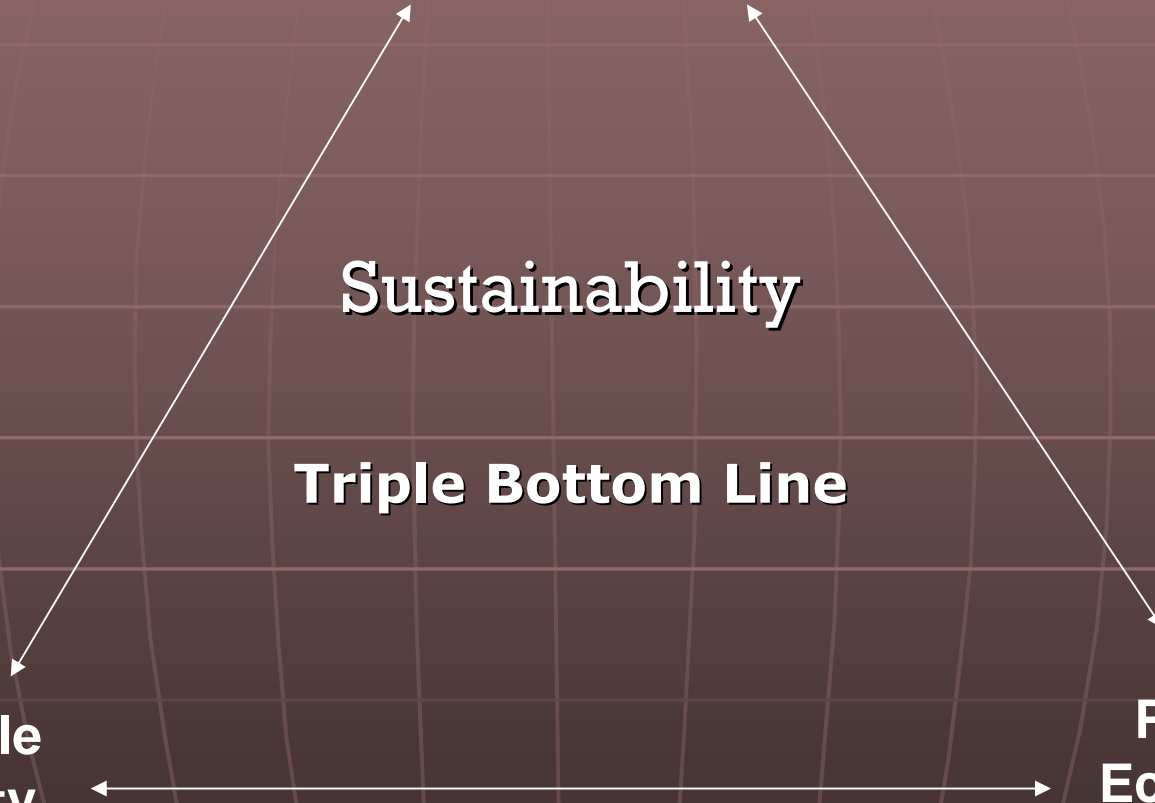
**Planet
Ecology
Environment**

Sustainability

Triple Bottom Line

**People
Equity
Social**

**Profits
Economy
Financial**



Sustainable Development

Society

Spirituality

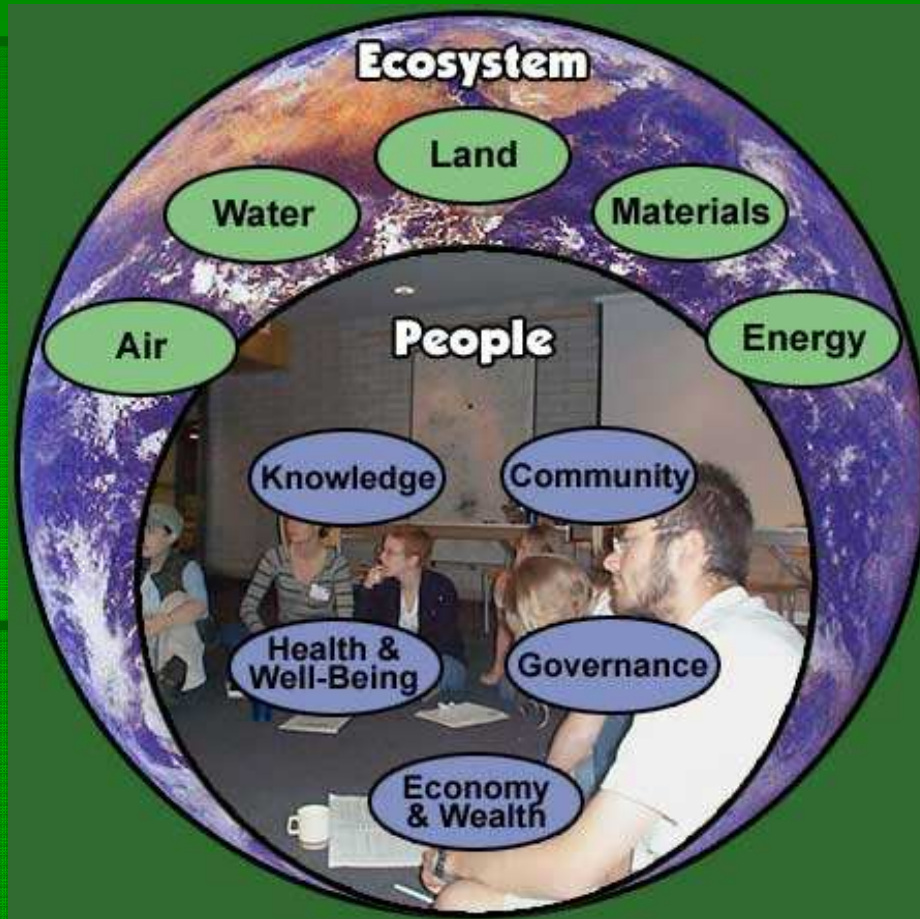
Economy

Sustainability!

Environment



Our Global Ecosystem=Nature + People



Decline in Eco-System Goods and Services (Supply)

NOW



Every eco-system on the planet is in decline: **Forests, topsoil, wetlands, air, biodiversity, oceans, lakes and rivers**

Increase in Population

NOW

1.3% per year = 77 million = 2.5 people/second

Increase in Consumption (Demand):

8 fold increase in last 100 years

Decline in Eco-System
Goods and Services
(Supply)

NOW

Increase in
Population &
Consumption
(Demand)

The Challenge:
Demand Surpassing
Supply

The Funnel

Decline in Eco-System
Goods and Services

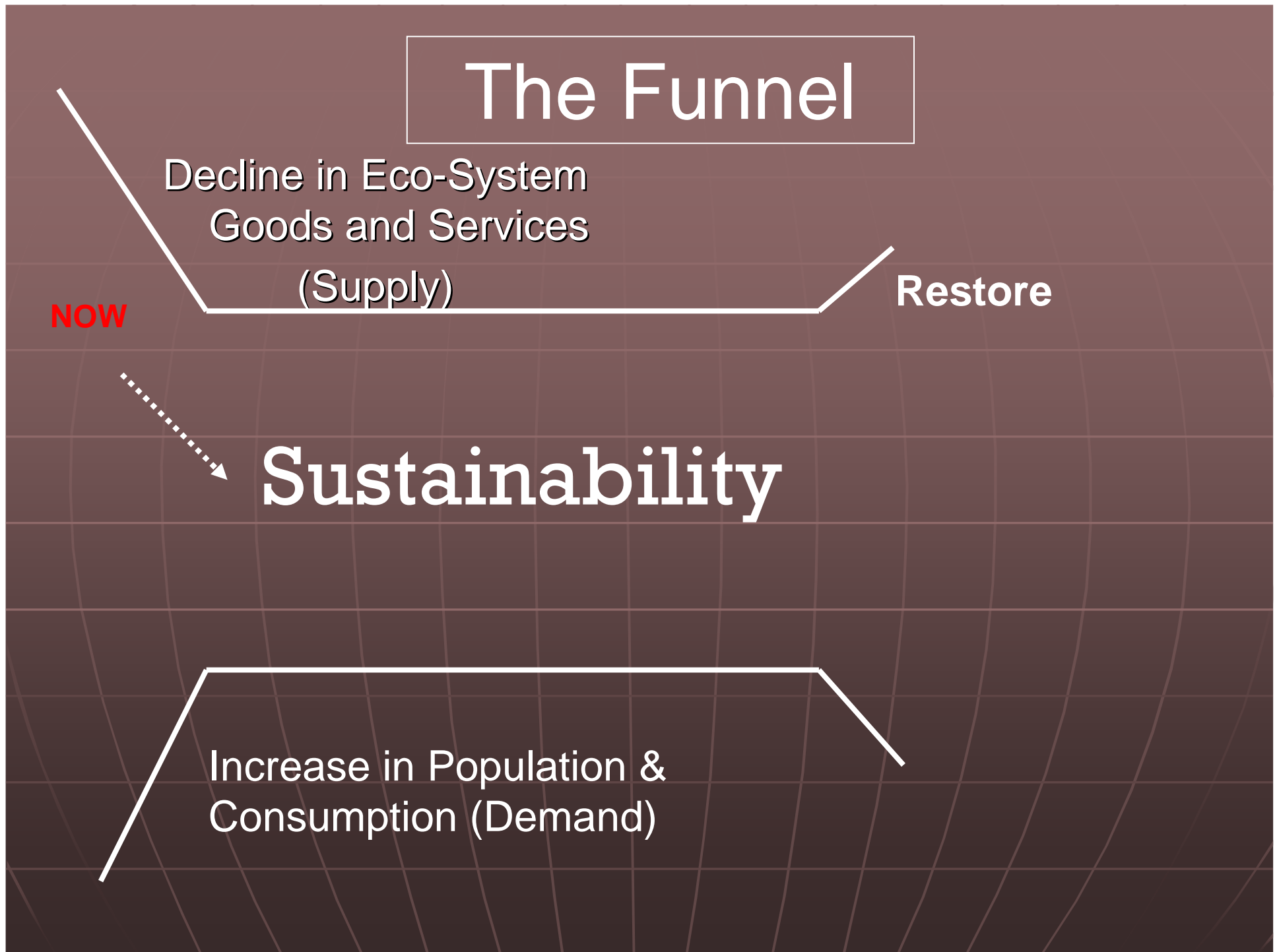
(Supply)

Restore

NOW

Sustainability

Increase in Population &
Consumption (Demand)



Our Mother, our home.. Gaia

Sacred Planet

Garden of Eden



Precious Gift

In the eye of the STORM

- CLIMATE CHANGE
- PEAK OIL
- Peak Phosphorus
- Floods and droughts
- GLOBAL WARMING
- U.S. DOLLAR MELTDOWN
- Population Increase
- Food Crisis
- Ocean fish depletion



If everyone in the world lived like an average **North American** we would need **five** planets to live on...



One Planet Living is a global initiative based on 10 principles of sustainability developed by BioRegional and WWF.



One Planet Living

If everyone on earth lived like a North American, we would need 5 planets to support us.

www.oneplanetliving.org



Ten Principles of One Planet Living

1 Zero Carbon

2 Zero Waste

3 Sustainable Transport

4 Local and Sustainable Materials

5 Local and Sustainable Food

6 Sustainable Water

7 Natural Habitats and Wildlife

8 Culture and Heritage

9 Equity and Fair Trade

10 Health and Happiness

Sustainable Food

*Bluegrass Community Partnership

*Climate Action Plan Team.Food sub-team

*Bluegrass School Community Garden Network

*Bluegrass Food Security Summit, Closing Food Gap

*

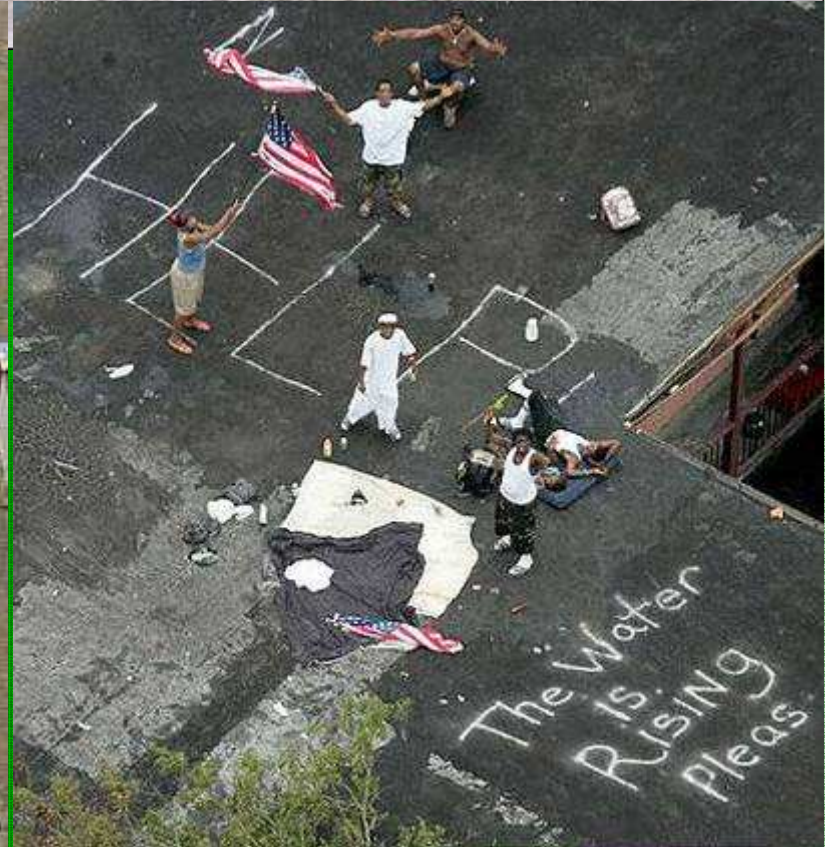


AFRICAN AMERICANS AND CLIMATE CHANGE: AN UNEQUAL BURDEN

JULY 21, 2004

Katrina Reveals Environmental Racism's Deadly Force

- Hurricane Katrina is a test of how America should respond to the effects of global warming.
- African Americans already are suffering disproportionately from the impacts of today's climate variability and extreme events, such as Hurricane Katrina's impacts in New Orleans in 2005 and Hurricane Floyd's impacts in North Carolina in 1999



Katrina

CANARIES IN THE MINE?

- Often, when we talk about global warming, issues of racial inequity are left out. We focus on “dirty” energy, our government’s failure to regulate corporate polluting and reluctance to create incentives for clean and renewable energy alternatives.
- *African Americans need to be in the leadership of the sustainability movement if we are to assure that our communities will be able to reduce the impact (mitigation) and build resilient communities (adaptation)*

Linked Together ----- Sustainability, Environmental Justice and Equity

- In recent years it has become increasingly apparent that the issue of environmental quality is inextricably linked to that of human equality at all scales.
- Peak Oil, Climate Change and inequity linked

Why Community Sustainability?

What does community sustainability mean to you?



Sustainability..whose business is it?

IMAGINE SHAWNEE

Planning the
future

Inspiring
sustainable
ways at home, at
work at play.

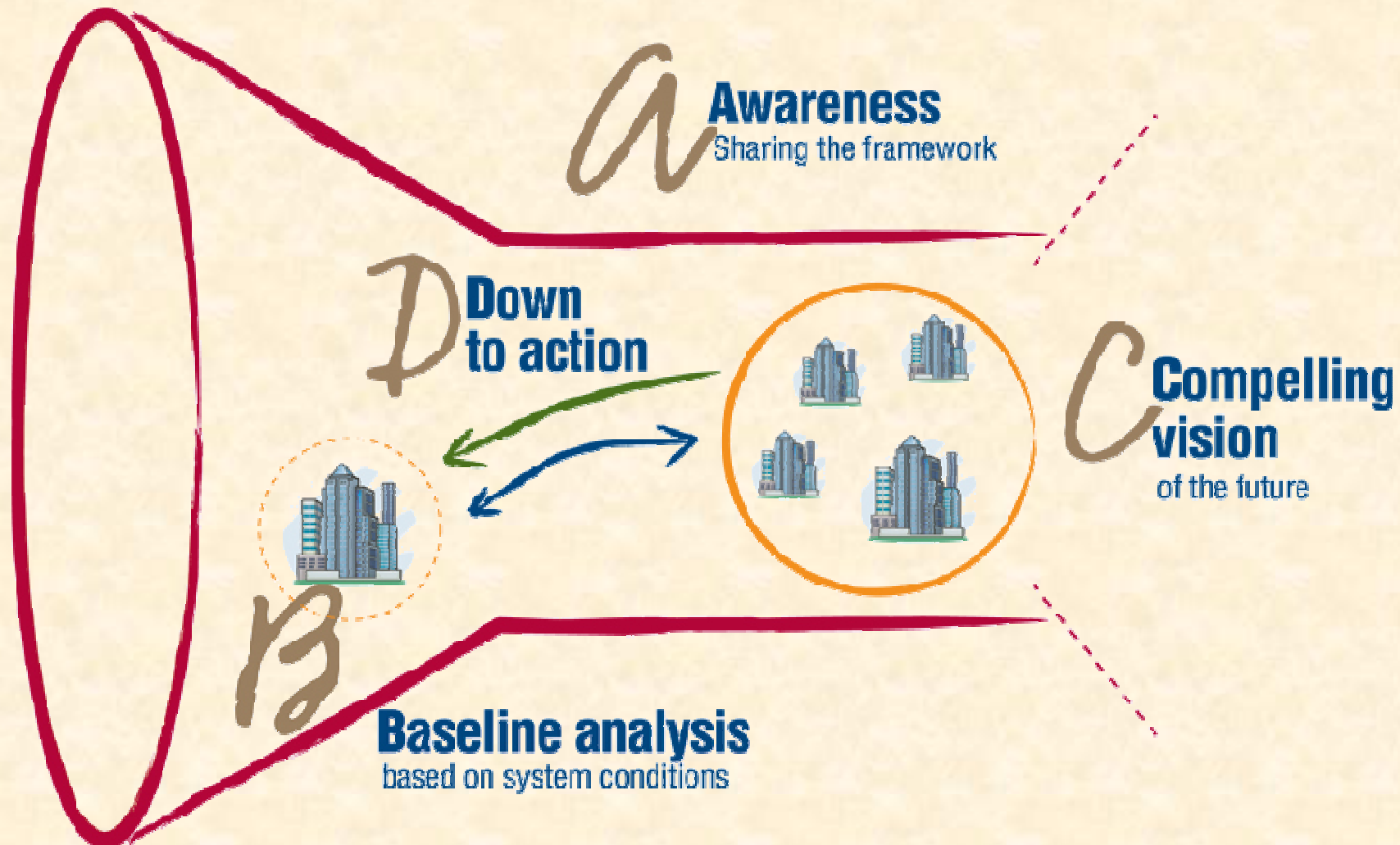


It's Everyone's Business!

Sustainability is not for the few or the fainthearted. It's a philosophy that ultimately must be embraced by all local governments, community leaders, business people, and individuals

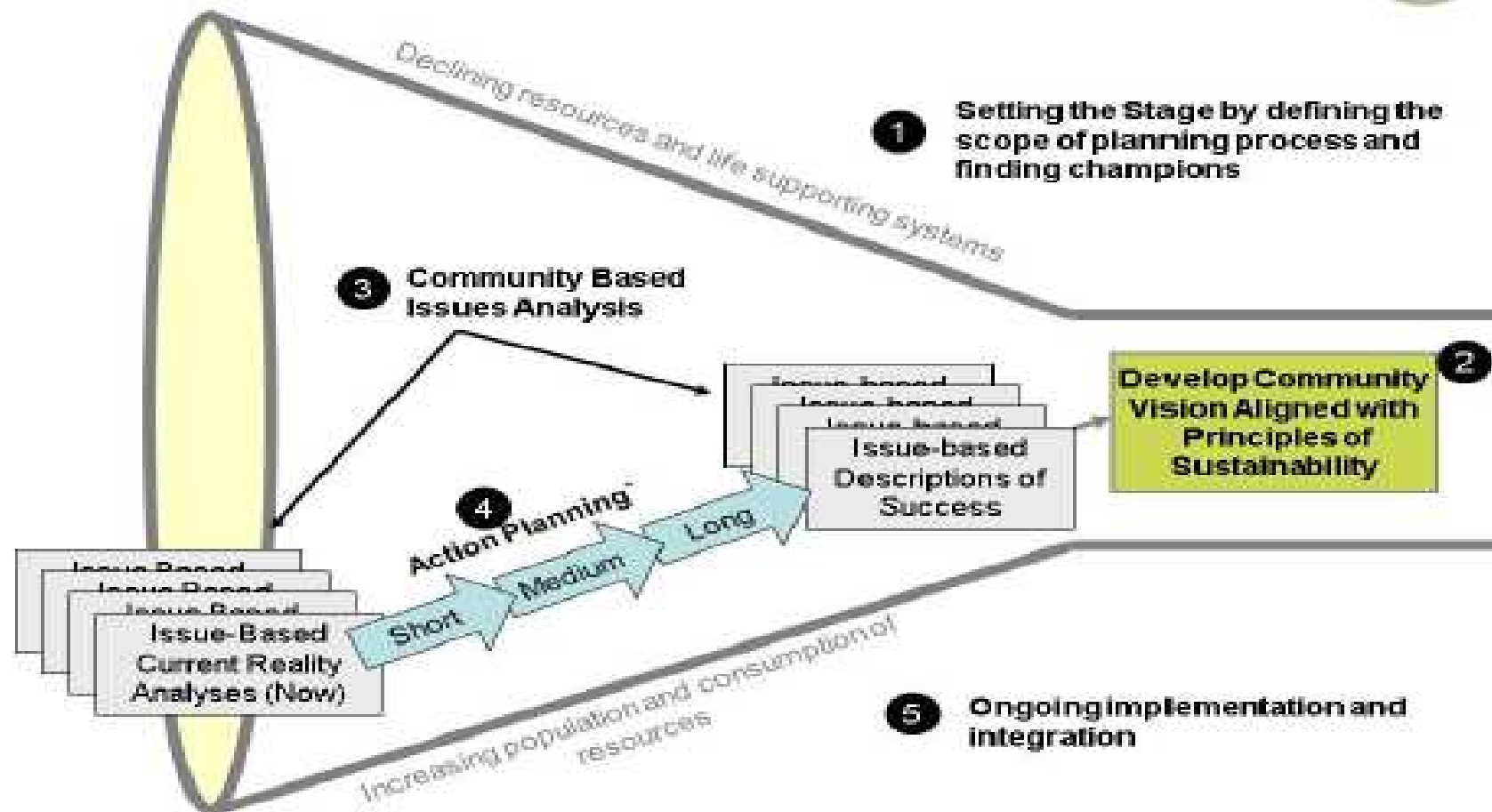
EVERYONE must
become eco-literate
and be seen as an
advocate for
SUSTAIN able living

Strategic Planning Framework



Shawnee Sustainability Plan

Integrated Community Sustainability Planning



This is typically a sentence that speaks to the values and aspirations of the community (see "Community Visioning", p. 32).

A High-level Community Vision Statement

Principles of Sustainability

Key Community Systems

Description of Success

Description of Success

Description of Success

Transition Strategies,
Actions and

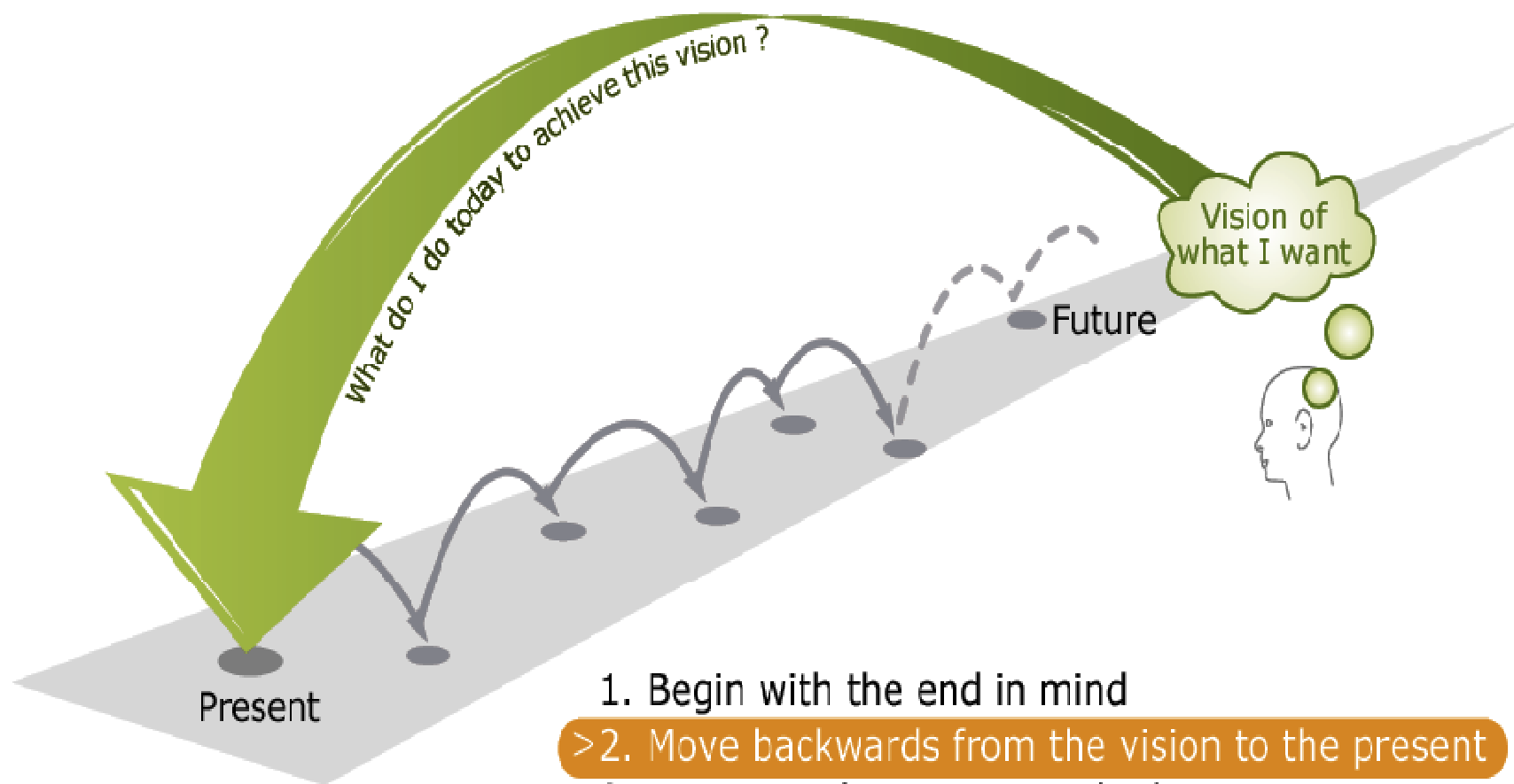
Transition Strategies,
Actions and

Transition Strategies,
Actions and

Description of Current Reality

Description of Current Reality

Description of Current Reality

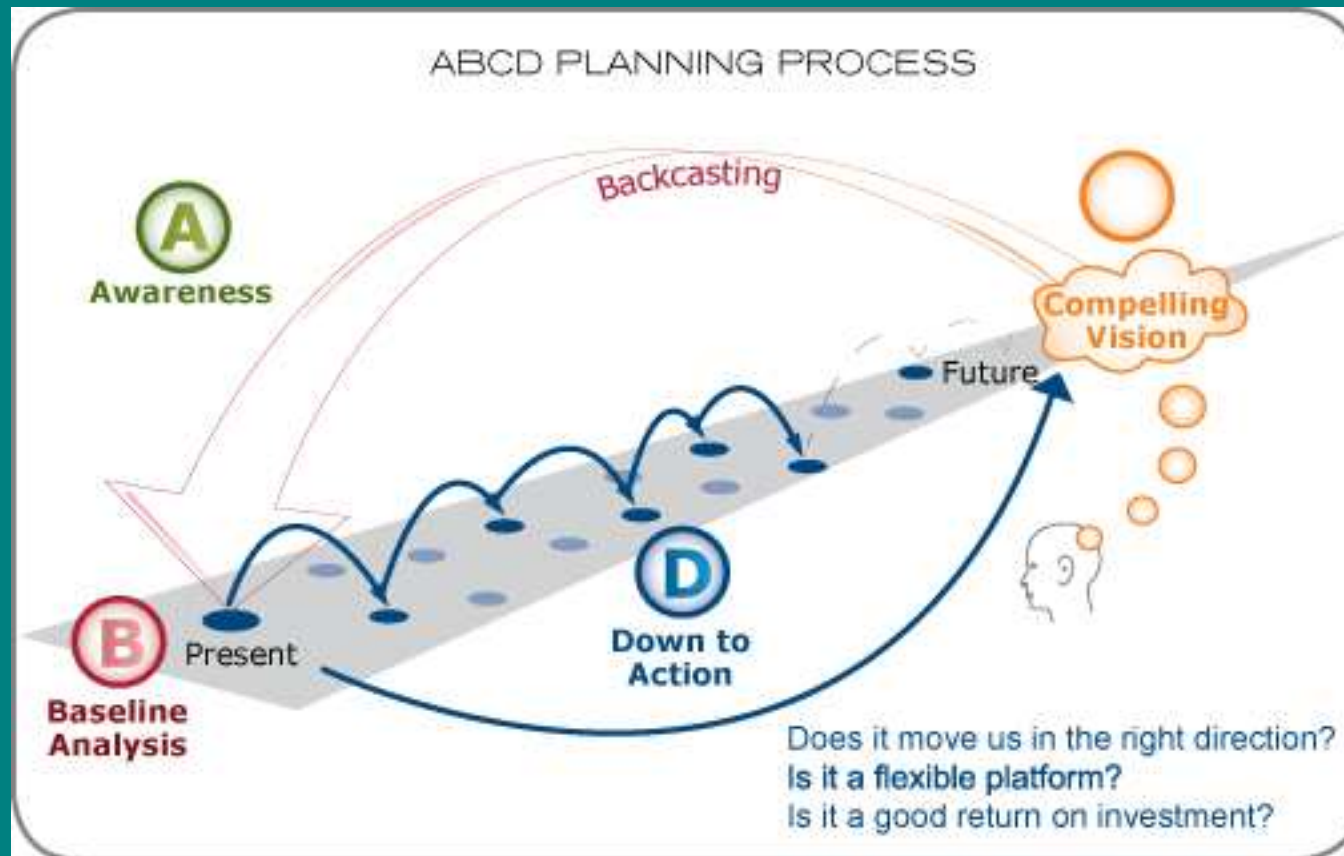


1. Begin with the end in mind
- > 2. Move backwards from the vision to the present
3. Move step by step towards the vision

*"If you don't know where you're going, you might end up
someplace else"*

Casey Stengel

Community Vision and Backcasting



Imagine SHAWNEE

Visioning Process

- What do you value about Shawnee Neighborhood?
- What is it like for you to live here?
- What changes would you like to see most?
- What are your hopes and dreams for Shawnee in 30 years?
- How could you help to make this happen?

Collect visions

- Public meetings that are interactive and participatory
- Engage youth in schools and parks with visioning charettes
- Elders in senior centers
- House of worship groups
- Barber shops and salons
- Focus groups
- Community events like the Shawnee celebration, Dirt Bowl,

Vision statement

Our neighborhood is a vibrant, caring community rich in urban amenities and opportunities for everyone. We value a healthy sustainable environment connecting people and places

Guided by principles of sustainability, we will work towards achieving the following objectives:

- o An inclusive community based on social equity and guided by citizen engagement through ongoing public consultation;
- o A community that fosters and supports affordable housing, a healthy business sector and a creative and adaptive economy;
- o A community whose energy needs are reduced and largely met by renewable resources;
- o A community where our food and material needs are produced locally, wherever possible;
- o A community in which the natural environment is respected and protected as our most valuable asset;
- o A community where pollution is reduced and solid waste production is minimized and increasingly recycled;
- o A community with active transportation networks where people do not have to depend on the automobile either for their mobility within the community or their links to the larger world."

A Sustainability Declaration

We are proud to be part of a community as rich in natural amenities, economic opportunities, and social possibilities as Canmore, and to be working on behalf of a future in which our economy, environment, society and governance are integrated in ways that foster vibrant communities, strong economies, and healthy ecosystems. To that end, we commit ourselves to creating the conditions necessary for a sustainable future. By seeking innovative and flexible solutions to the challenges that confront us, by sharing our knowledge, and by coordinating our actions, we strive to:

Potential Community Systems

Community System	Description
Arts/Culture/ Heritage	How arts, culture and heritage will be supported, enhanced and delivered, and how they will stimulate and support the transition to sustainability in your community.
Built Environment	How to develop and renew buildings, neighbourhoods and facilities that will contribute to making your community unique, liveable, affordable and sustainable.
Economic Development	How to create a strong local economy and develop and maintain successful, resilient businesses that help move the community toward sustainability.
Energy	How to meet your community's energy needs in an efficient, affordable, sustainable and reliable way, while managing greenhouse gas emissions and air quality.
Food	How to ensure a healthy, nutritious and sustainable food supply that maximizes opportunities to build the social, ecological, cultural and economic capital of the community.
Health and Social Services	How to meet the health and social needs (including physical, mental, spiritual and emotional) of the community.

Potential Community Systems

Learning	How to meet community needs for formal and informal lifelong learning.
Materials and Solid Waste	How to meet your community's need for material supply and disposal through the most efficient use and reuse of the most sustainable materials and keeping waste out of the natural environment.
Natural Areas	How ecosystem integrity and biodiversity will be protected and where possible restored in your community/region.
Recreation & Leisure	How recreation and leisure activities for both residents and visitors will be delivered to exceed expectations while protecting the environment.
Transportation	How to move people, goods and materials to, from and within the community in a more sustainable manner.
Water	How to provide a dependable supply of high quality water in a way that maintains healthy aquatic environments and uses water efficiently.

Community Strategy areas could include:

Economic

Resident Housing

Resident Affordability

Health & Social

Arts, Culture & Heritage

Recreation & Leisure

Transportation

Built Environment

Energy

Water

Materials & Solid Waste

Visitor Experience

Learning

Natural Areas

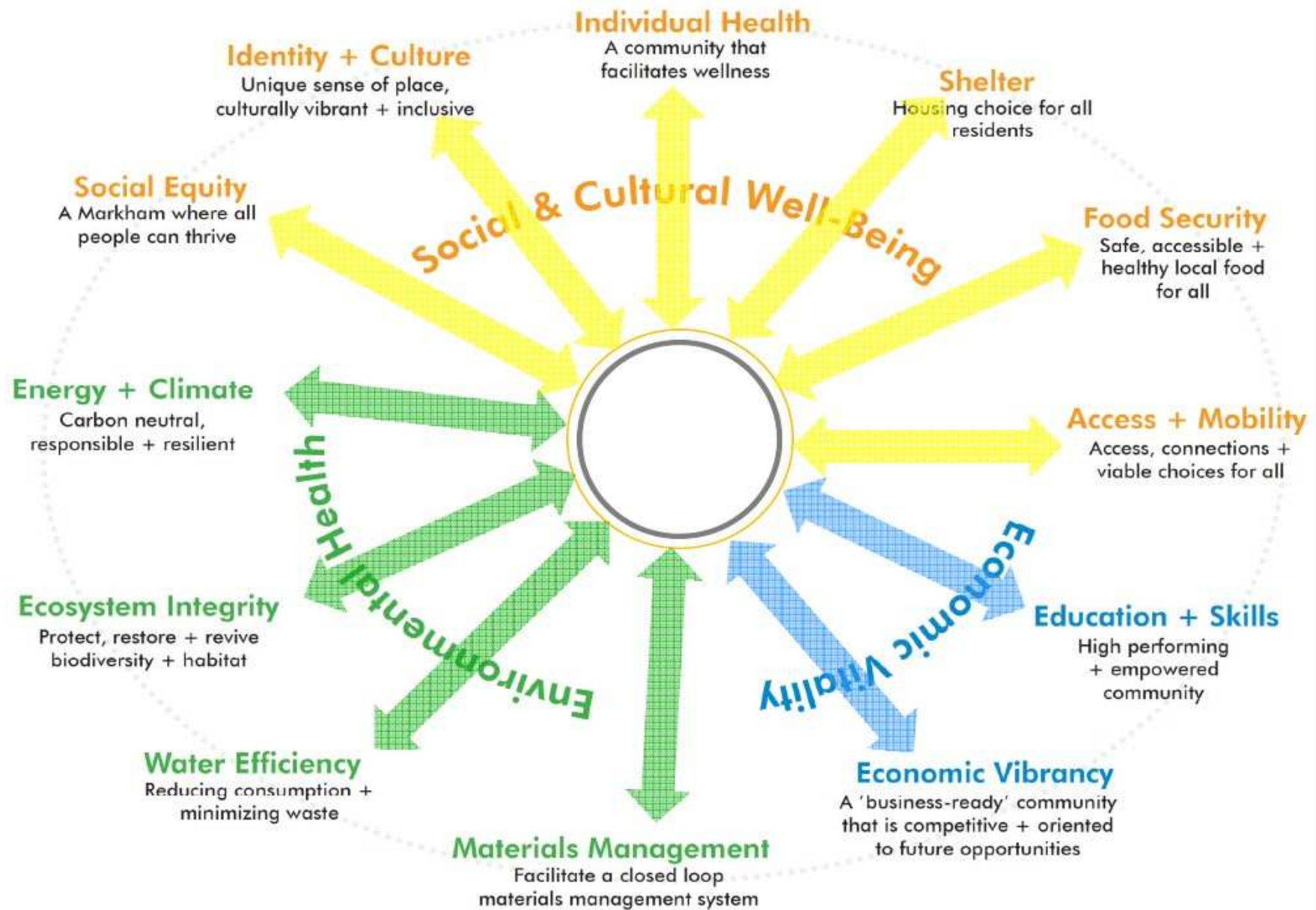
Partnerships

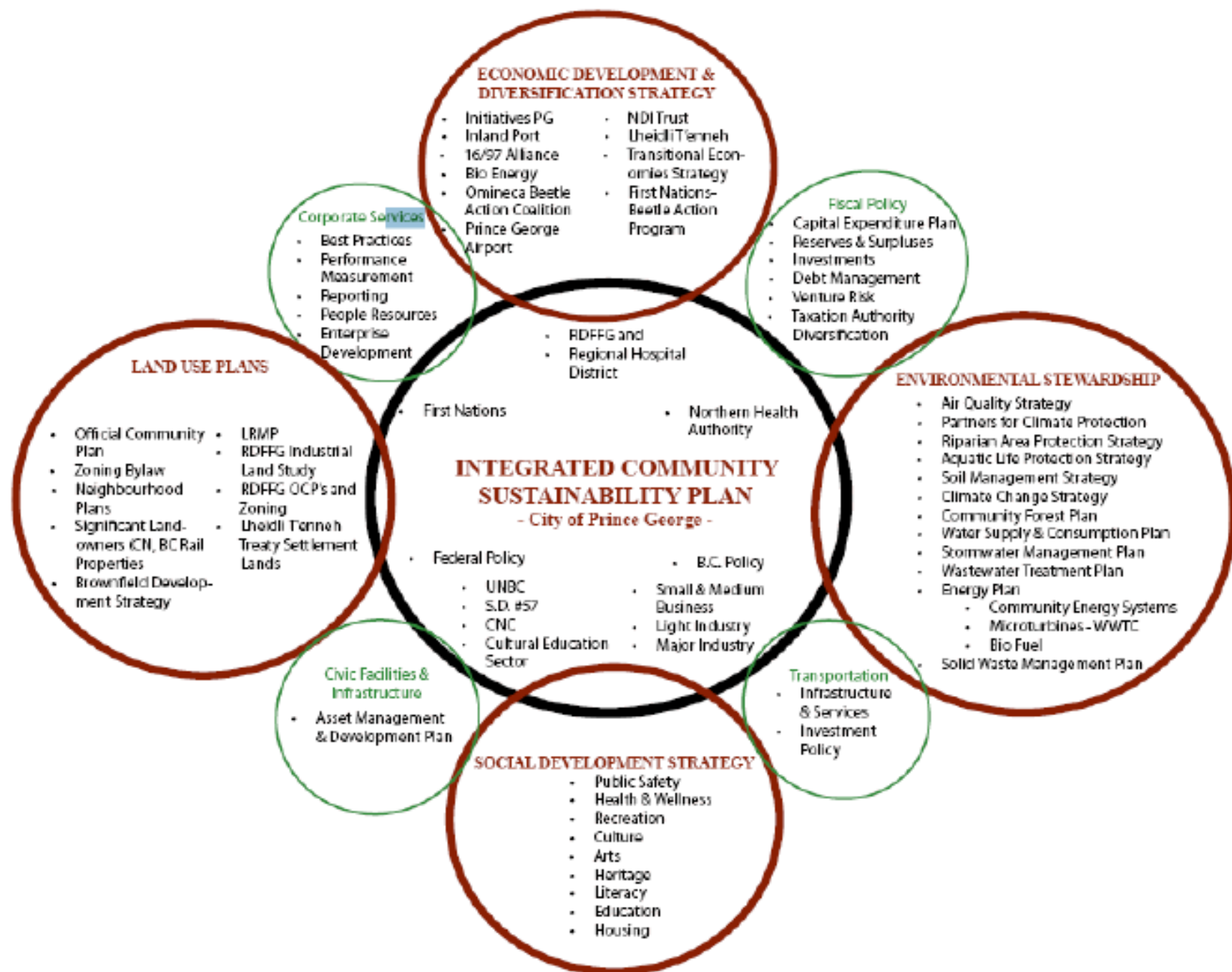
Finance

Food

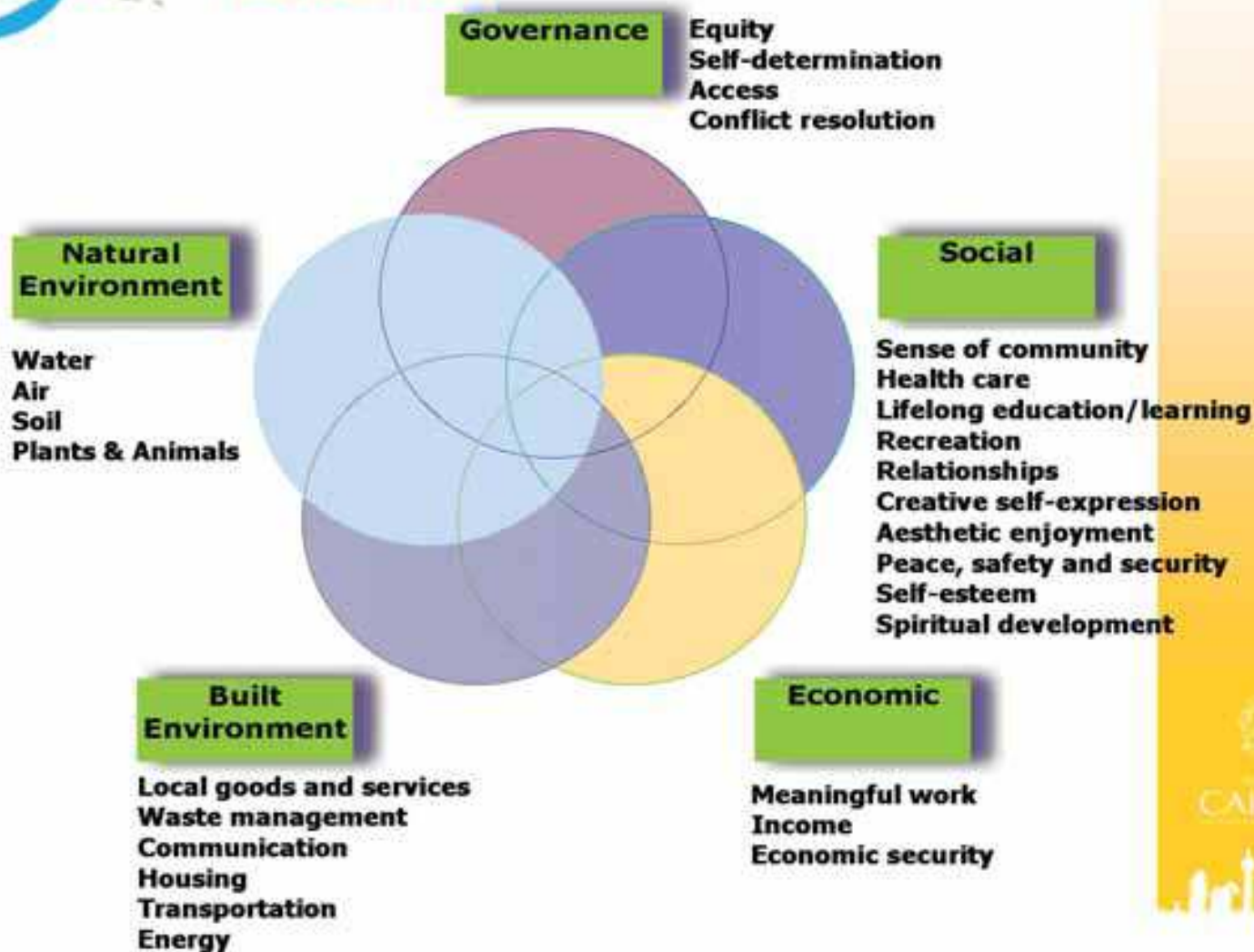
Restorative Justice







5 Working Groups



A Systems Perspective Emphasizes

- Looking at the whole
- Interconnections between things
- Principles rather than details
- Shared framework & a common language
- Focusing “upstream” during design rather than “downstream” after harm begins and it’s harder to address
- Necessary (non-negotiable) conditions or principles for sustainability

Phase One or A: Awareness of Sustainability Principles

It is important to align key decision-makers and stakeholders around a common understanding of sustainability and a whole systems context. This is provided through the Natural Step Framework Principles of Sustainability, Basic science and a whole systems approach.

Phase Two or B: Baseline Assessment

This involves conducting a sustainability analysis of the organization based on the four principles of the NSF.

An assessment is made of the major flows and impacts, including the entire supply chain, products and services, energy, capital and human resources from “cradle to cradle.”

Phase Three or C: Create a Sustainability Vision and Strategic Plan

Key decision-makers and stakeholders work together to create a compelling long-term vision for a sustainable enterprise, including the service they are providing the world.

From the vision they develop a strategy and action plan for moving toward sustainability, utilizing “backcasting” or reverse engineering to get from their vision to where they are today.

Phase Four or D: Down to Action

This phase supports effective, step-by-step implementation of specific initiatives developed in the strategic plan through appropriate training, organizational learning and change techniques, followed by measuring progress toward goals and making needed modifications. Organizations select initiatives and investments that provide benefits in the short-term while retaining a long-term perspective.



Exploring Positive Growth

ITHACA

What is Sustainability?



Sustainable development is development that meets the social, economic, and environmental needs of the present without compromising the ability of future generations to meet their needs.

~ Brundtland Commission, *"Our Common Future"*

In every deliberation we must
consider the impact on the seventh
generation.

--Great Law of the Iroquois

Sustainability

Whole-systems thinking * QUANTUM
THINKING vs Newtownian

Humane *and* biocentric focus *.

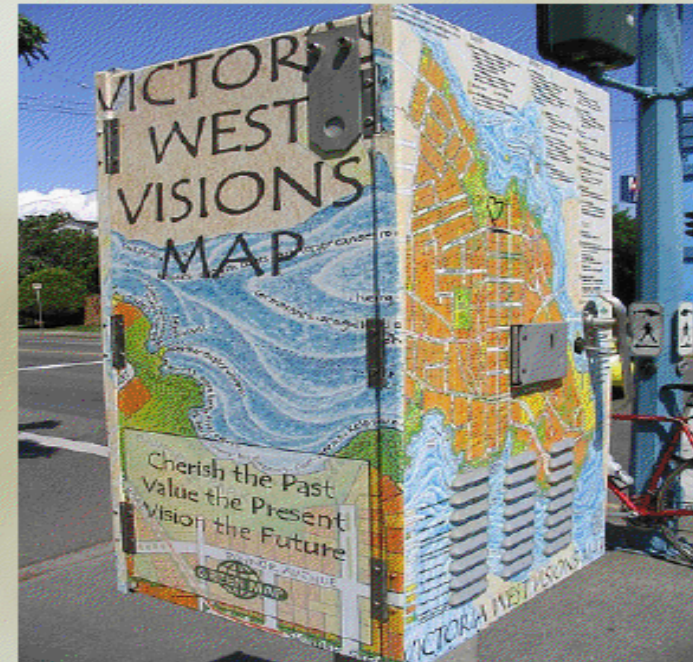
Learning and innovation *

Leadership and partnership
Community participation and capacity
Youth development and engagement
Spirituality-sacred Earth connections*

IMAGINE Shawnee Plan

Creating a plan frameworks for development and change

- What is the community vision?
- Timeframe: long-term vision linked to short term cycles and goals
- Scale: links to neighbouring jurisdictions, nested systems



Good Food Revolution

- "There is a quiet revolution stirring in our food system. It is not happening so much on the distant farms that still provide us with the majority of our food; it is happening in cities, neighborhoods, and towns. It is a movement that has the potential to address a multitude of issues: economic, environmental, personal health, and cultural."
- *United Nations*

George Washington Carver 100 years ago

Terra madre®



© Isotta Dardini / Colois

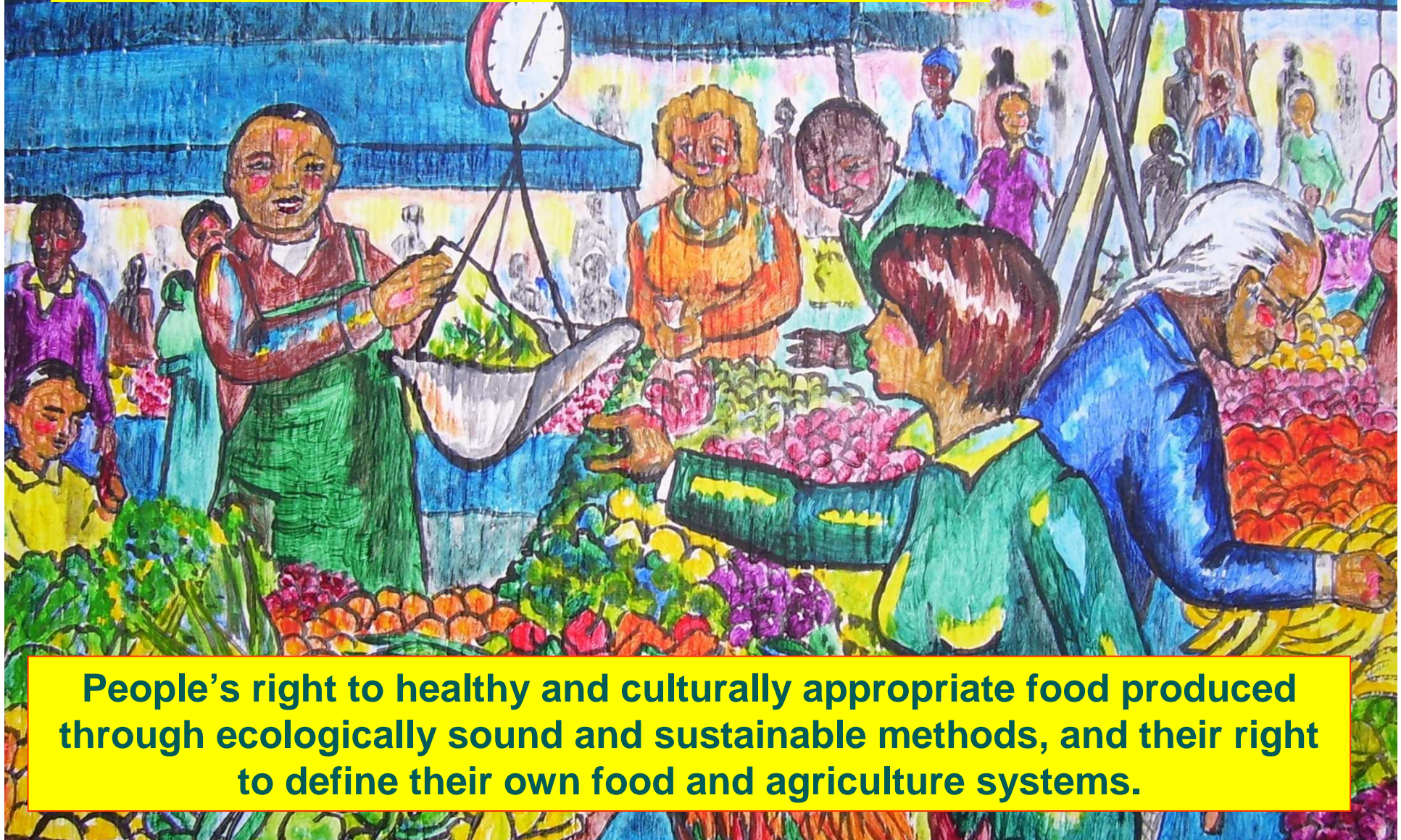


Slow Food®



Food Sovereignty

Democratizing the food system



People's right to healthy and culturally appropriate food produced through ecologically sound and sustainable methods, and their right to define their own food and agriculture systems.

Food Sovereignty

- 1) Organize for change
- 2) Build local food economies
- 3) Create a policy climate that allows sustainable food systems to grow
- 4) Resist forces that perpetuate destructive and unjust industrial food system

Food Justice

- access to fresh foods by all residents
- elimination of food deserts
- justice for farm workers and other workers in the food system



White House Garden





Mrs. Obama and Assistant White House Chef Sam Kass were joined by 26 fifth-graders from Bancroft Elementary School for groundbreaking



“Let’s hear it for vegetables!” Obama cheered. “Let’s hear it for fruits!”

“My hope,” the first lady said “is **that through children, they will begin to educate their families and that will, in turn, begin to educate our communities.**”

Youth GreenCorps

Formed
2007...Growing the
future
together...Engaging
youth in the building of
sustainable
communities



Garbage cans?????



Rain Barrels





Wood sculpture





Strawbale construction..Turtle Island....sacred Earth...N. America

















Environmental Sustainability

- reduced transport cost
- reduced cold storage
- reduced packaging
- sustainable urban design (heat island effect, storm water, resource conservation)







Food-Collar Economy

- Regional Procurement of Food
- Higher wages and benefits for workers
- Support rights of farm workers
- Food deserts
- Processing plants
- Refrigeration

(Photo: Architectural Design by Rolf Mohr; Modeling and
Rendering by Machine Films; Interiors by James Nelms; Digital
Artist @ Storyboards Online)





Green Roofs...roof gardens





Catherine Ferguson Academy-Detroit

- Detroit school for teen mothers 6-12 grade
- Working farm in this inner city school
- They raise horses, sheep, goats, chickens, ducks, bees, 100 fruit trees, large vegetable garden...bale 1000 bales of hay, built barn
- Nobel Peace Committee grant to build wind mill and solar collector
- 99% rate of graduation,
- 90% go to post secondary,
- 80% no second pregnancy

Gave tours to Danny Glover, Ossie Davis, Nobel Peace, Europe, Africa, Asia,







Twelve hundred broilers and 440 lbs of honey will be produced by students involved in the Catherine Ferguson Academy Agriscience Program





Film Showings with CFA principal, Dr.
Asenath Andrews in Kentucky

April 26- 28

South Africa for Youth Conference

www.grownindetroitmovie.com



THE EMERALD CITY

Oprah
Magazine
April 2008

URBAN EDEN

A rooster hangs out at the Catherine Ferguson Academy's urban farm in west Detroit. *Opposite page, clockwise from top left:* Gardener Nefertiti Harris and farming movement leader Ashley Atkinson at Romanowski Farm Park. Patrick Crouch

Growing Power...urban agriculture Milwaukee and Chicago

**founder Will Allen awarded
2008 MacArthur
Fellowship**







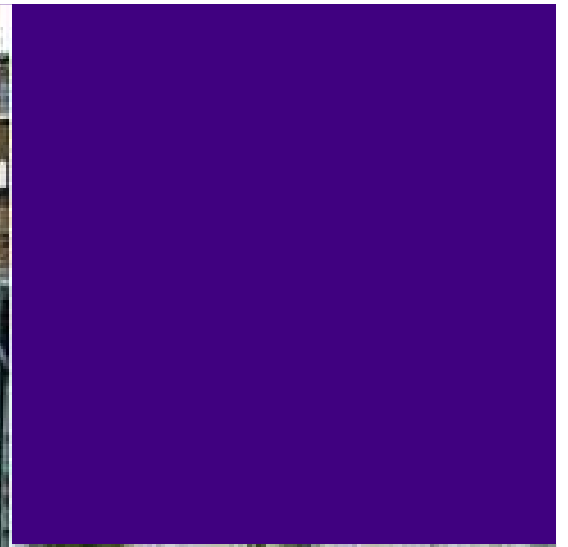
Not just growing food...

but growing
people.















Dudley Street Neighborhood Initiative

- DSNI.org
- DNI is structured as a Community Land Trust (CLT),
- Began in 1984
- Gained power of eminent domain
- Integrated community visioning and planning
- Book about DSNI Streets of Hope
- Film about DSNI ***Holding Ground: The Rebirth of Dudley Street***, 58 minute video produced by Leah Mahan and Mark Lipman, Holding Ground Productions,
- DSNI's **Resident Development Institute (RDI)** is a repository for community history, learning, and innovation. It captures community guidance into standards, and provides the data, information, tools, and processes for good community decision-making.

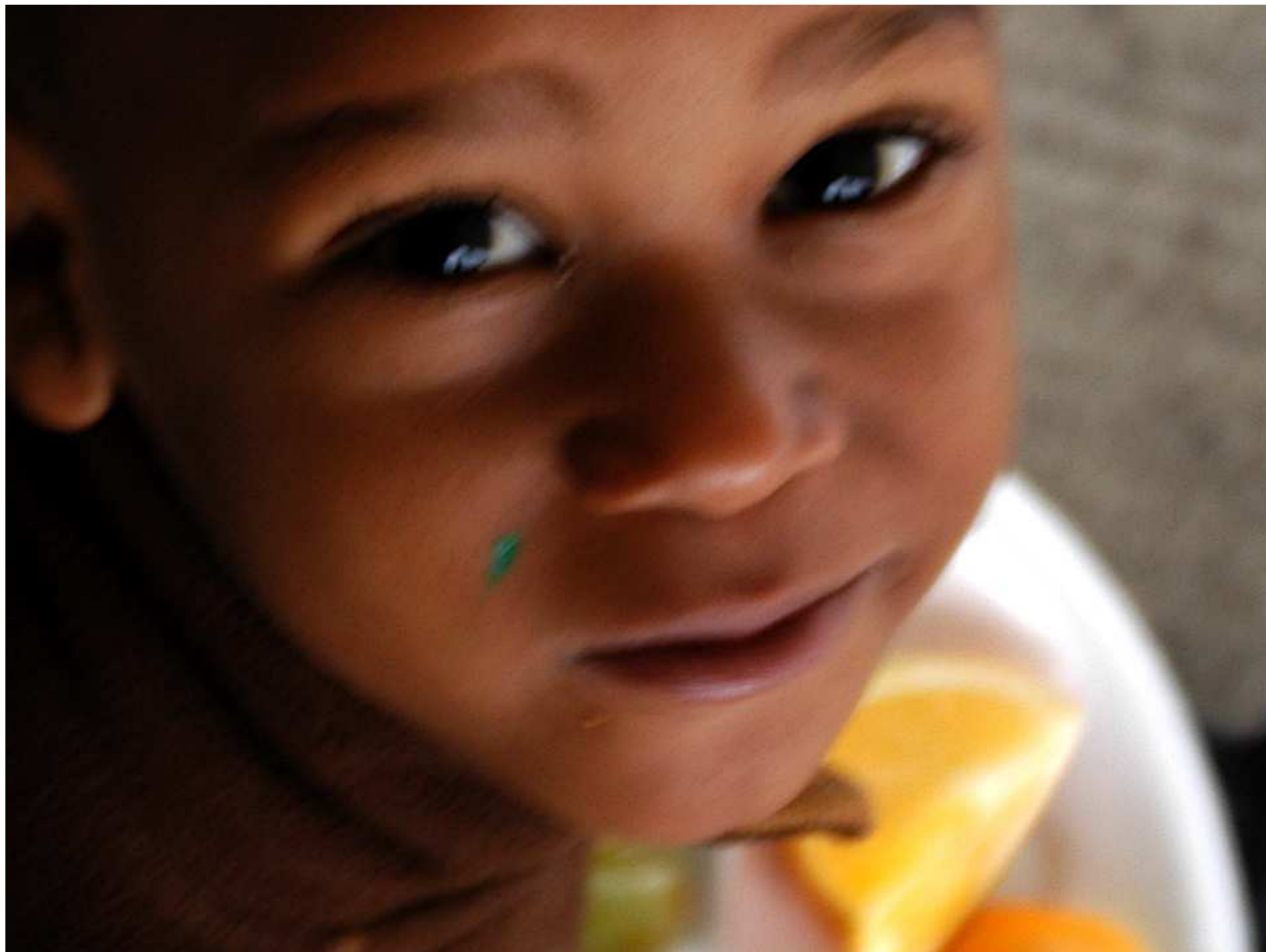
Dudley Youth Council (DYC) – Neighborhood youth formed the DYC with the mission is to establish a united youth voice in the Dudley area, motivating and empowering young people to better the local and broader community through positive action.



IMAGINE Shawnee

- Community Wireless system
- Community Broadband service
- Community energy production...wind, solar, biodiesel
- Vertical Farm
- Community Resident resource file
- Community Resident needs file
- Match Maker project
- Neighborhood website
- Affiliate with Manchester Craftsmen Guild

- Manchester Craftsmen Guild in Pittsburg begun by Bill Strickland 20 years ago arts based for youth and adults at risk
- Community Wireless system
- Community Broadband service
- Community energy production...wind, solar, biodiesel
- Vertical Farm
- Community Resident resource file
- Community Resident needs file
- Match Maker project
- Neighborhood website



Leaders for a Sustainable Future

- **Challenged to be
“architects of the future
not defenders of the decline”**

Consuming



Consuming



Consuming



Consuming



Turbulent Transition



The cellular structure
of the caterpillar
dissolves

Slide courtesy of Elisabet Sahtouris

Crisis as Opportunity in the Chrysalis



Finding its place of service

